

# TIFFANY TIMES

SEPTEMBER 2016 ~ VOL. 3

The advancements in our Heavy Equipment over the last 50 or so years, is graphically demonstrated by the photographs in this issue's Then & Now feature. The Michigan Loader utilized 57 years ago by TCC operators, lacked the Roll Over Protective Structure (ROPS), a closed cab of any kind (not to mention it lacked AC). The lack of power steering and the rougher ride ensured operators got a workout while moving dirt back in the day.

The millions spent in R&D by the major manufacturers result in amazing technological and safety advancements in the new equipment. Not only can these machines do more than they ever have, they allow us to do it faster, safer, and more precisely with the addition of onboard GPS capabilities. TCC is proud to maintain a fleet of modern heavy equipment, skilled operators and a maintenance team that never stops learning and adjusting to the new technologies of these machines. We can only imagine what the next 50+ years will bring.



I would like to take a moment to congratulate Jim Peters on his recent retirement, we'll miss you Jim. Best wishes in Pennsylvania.

*Herb Tiffany*



*TCC Past Employee Bill Mason in 1959  
with Michigan Loader*

## THEN & NOW

*TCC Employee Max Barnes in 2016  
with Cat Loader*





## Soldiers Wash Pedestrian Bridge Improvement Project



A continuation of the City of Sedona's Soldiers Wash Improvement project, TCC crews widened and reinforced this section of the wash before replacing the pedestrian bridge that connects Tlaquepaque Village and Los Abridados for visitors and employees.

The new thirty foot pedestrian bridge spanning the channel features a new pre-fabricated weathering steel bridge that provides safe and long lasting passage for visitors while blending with the surrounding aesthetics of this unique Sedona attraction. The addition of permanent Jersey Barriers adjacent to the parking lot and the removal of sediment in the channel offers improved storm run off capacity while helping protect the area from flooding.

The Soldier Wash Improvements were tested on August 10th when emergency warning sirens sounded in Oak Creek Canyon alerting for high flood water potential. Approximately 1.5 inches of rainfall was recorded in the area around and upstream of the shopping village.

Unlike the 2009 flood that caused hundreds of thousands of dollars in damages to the area, this most recent storm caused nothing other than some excited visitors safely behind the new barrier wall watching the wash fill with rushing flood waters.

With the lower section of Soldiers Wash Improvements complete, TCC will be focusing its efforts both upstream and downstream in the remaining phases of this project for the City of Sedona, which is scheduled to commence in January.



Before



After

*"They have cleaned and made Soldiers Wash wider and more robust..."*

Gary Johnson  
Sedona Fire Department

## PVNGS -

*Excavate,  
Expose,  
Wash,  
Repair,  
Seal,  
Backfill,  
Compact  
& Repeat...*

*21 Times*



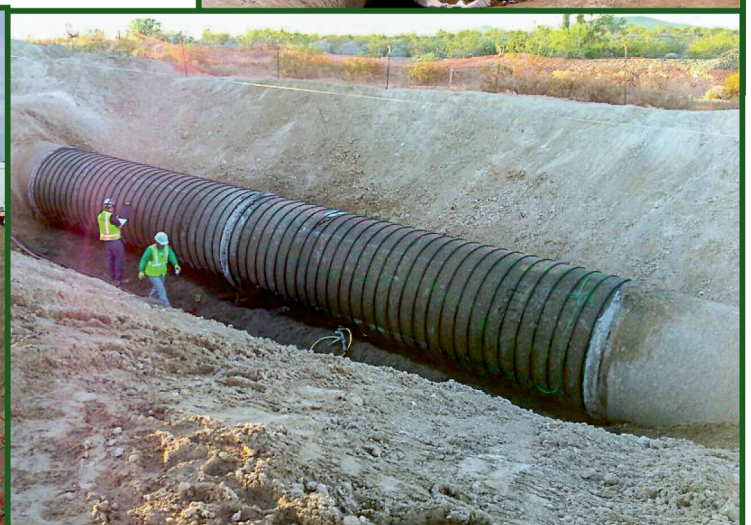
## PALO VERDE NUCLEAR GENERATING STATION - SPRING OUTAGE

For Tiffany Construction Company, a typical Outage at PVNGS involves several crews comprised of personnel from all over the state. For twelve days these crews alternate between the different spool sites in split shifts allowing the work to be performed 24/7 during an outage. TCC has completed several successful pipeline outages for the Palo Verde Nuclear Generating Station and the Spring 2016 Outage was no exception. It is TCC's jobsite management and the dedication and attention to detail of all of our employees that contributes to a successful, event free outage.

Our veteran superintendents, foremen and experienced crews coordinated manpower, equipment and other contractor's activities to complete this outage ahead of schedule and within budget.

This particular outage involved uncovering 21 pipe spools buried between six and ten feet deep. There were four spools of 96" diameter pipe and 17 spools of 66" diameter pipe that were excavated, exposed, tendons installed, encapsulated with shotcrete, backfilled and compacted. During the excavation phase, the pipe is completely uncovered and one foot of material is then removed from under the pipe. A unique attachment has been designed which enables our large excavators to safely dig under the pipe offering full pipe exposure in preparation for the tendon installation. After the spools are uncovered, tendons are installed, (that act as support bands) and then covered with shotcrete.

Once the concrete has hardened and the pipe is covered with protective plastic, our crews start the backfill operation where the excavators, loaders and compactors take over the site until you can not even tell we were there.





## EMPLOYEE SPOTLIGHT



### JIM PETERS

Foreman

*After 48 years of pushing dirt and chasing utilities, he's*

*officially retired!*

Jim began his career in Pennsylvania in '68 where he spent the first 16 years of his career. Deciding it was time to thaw out, he left the lush green (when it wasn't white) rolling hills of the northeast behind and headed west. In his 32 years in the AZ desert, Jim has been a Foreman with TCC for 15 yrs. His extensive background and experience with underground pipe, made him one of our most requested Foremen. Jim was seen most frequently in Cottonwood, Kachina Village and Forest Highlands at all hours of the day and night performing scheduled and emergency repairs for these agencies.

Jim's retirement will begin with taking his wife Mary back to Pennsylvania where they have found a charming home with enough land to keep Jim out of Mary's hair and out of the dog house.

Jim,

Your boisterous laugh and generous heart will be missed by us all. Thank you for your years of dedication to excellence & Enjoy your retirement!

## UNDER CONSTRUCTION

PVNGS - Fall Outage  
Kachina Trails Utility Relocations  
PVNGS - Generator Building  
Coffee Pot Drainage Improvements - Phase III  
SRP Pond S3 (Page, AZ)  
PVNGS SP 1547 UG Pipe Replacement  
PVNGS - PA Paving  
Arizona Water Company - Munds Canyon

Main Office:  
2800 N. 24th Street  
Phoenix, AZ 85008  
602.276.2414

Main Office Mailing:  
P.O.Box 97970  
Phoenix, AZ 85060  
[www.tiffanyconst.com](http://www.tiffanyconst.com)

## FROM THE SANDBOX



### With Mike Lynch, Superintendent

Summer in Arizona brings many dangers that can effect us on the jobsite in addition to task related risks. Dehydration and heat stroke have been major risks during the soaring temps we've seen this year and have kept us all fighting to keep hydrated. We have seen some intense Monsoon storms across the state as well this year. With the winds, blowing dust and potentially heavy rains, comes the reminder that we all need to be aware of our work areas and be very aware of the location of all of our crew members and equipment. If you are working in a drainage area and it starts to thunder and/or rain you should move your crew to higher ground until the threat of flooding has gone. Just because it is not raining in your immediate area, does not mean that your crew is out of danger.

*A rain storm on the other side of town can bring water to your job site through a wash in twenty minutes or less.*



We were reminded of this when a storm across town led to flash flooding on one of our projects in Sedona before it began to rain on the work site. With the help of modern technology we are now able to check the weather and get frequent updates, but you must still remain alert and aware of your environment. Thankfully this incident didn't cause any damage or injuries, but it did serve as a reminder to the dangers of monsoon season. Our crews are family and our most valuable asset on any job.

*Stay alert and look out for everyone on your jobsite!*

Sedona Office:  
75 Kallof Place - Ste.101  
Sedona, AZ 86336  
928.204.9817